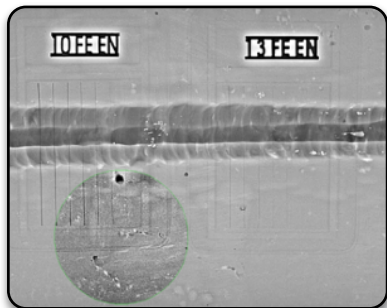


## Ultra Portable X-ray DDA with embedded wireless module and battery



### APPLICATIONS

- ▶ Portable digital system for indoor and outdoor x-ray jobs
- ▶ Quality control of large structures in aerospace, aeronautic, shipyards, on pipes, power lines, buildings, railway, windmills, ammunitions, ...)
- ▶ Periodic maintenance control
- ▶ Weldings, castings, corrosion under insulation, composite materials, ...
- ▶ Historical assets (in Museums, laboratories, universities, ...)



### KEY FEATURES

- Ultra portable** Battery and wireless module (embedded into the panel) !  
Generate X-ray pictures anywhere : use the **Dereo UP** in a shielded cabinet or take it out at any time to use the **Dereo UP** as an extremely portable tool on site.  
Ultra light DDA : Down to 2.8 kg.
- Robust** Tough handle, bumpers, military standard and magnetic connectors, strong carrying case, ... will definitely grant a high level of robustness of your **Dereo UP** on the field.
- Quick set-up** Very fast set-up and easy use thanks to smart hard- and software features.
- Digital**  
**Dynamic DDA.**  
Immediate image after couple of seconds.  
**Very user-friendly Maestro** software.  
Post-processing.  
**DICONDE** format for universal file exchange.  
Easy archiving & reporting.
- Image quality**  
**Unique :** With **GemX** X-ray generators, change kV and mA during X-ray shot and adjust the image. « You just can't fail your x-ray shot ! »  
Automatic averaging.  
**Dereo UP** (100 µm) complies with ISO 17636-2 :
  - Class B for thickness higher than 4 mm.
  - Class A for thickness higher than 1 mm.
- Highest sensitivity** Impressive signal to noise ratio (SNR > 500 !) thanks to smart calibration process and fantastic contrast resolution better than 1% (EN 462-1).
- Ultra thin** Possibility to slide the **Dereo UP** between 2 objects.  
Removable bumpers in order to reduce the thickness if necessary.  
**Thickness of 17mm, only!**

# Dereo UP DDA SPECIFICATIONS

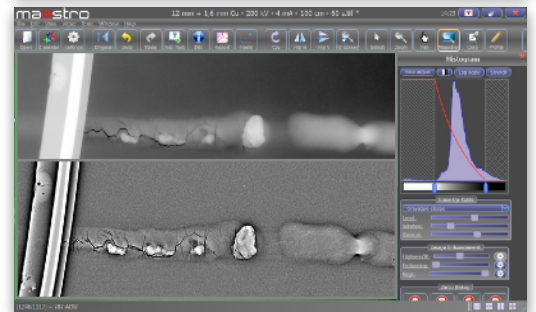


MODEL	TECHNOLOGY	ACTIVE AREA (cm)	PIXEL (µm)	GREY LEVEL (bit)	EXTERNAL DIMENSIONS (mm)	WEIGHT (kg) battery included
<b>Dereo UP 2530</b>	@-Si	25 x 30	100	16	412 x 321 x 17	2.8
<b>Dereo UP 3643</b>	@-Si	36 x 43	100	16	543 x 430 x 17	4.0

**Unique :** let us know your application and **X-RIS** will select **the right scintillator** for you.

## Maestro SOFTWARE

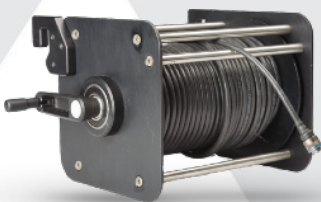
- ▶ Software interfaces developed **by and with field users**
- ▶ **Maestro Touch** for touchpads and **Maestro** for laptops
- ▶ Very **intuitive** software interfaces. Access to all key tools of **Maestro Touch** with your thumbs and with one click mouse on **Maestro**
- ▶ Zoom in / out, screen adjustment, rotation, horizontal and vertical flip, cropping, ...
- ▶ Access to the LUT (look-up-table)
- ▶ Black and white reversal
- ▶ Annotations
- ▶ **Real time** magnifier
- ▶ **Real time** filters (ACUITY, Defect, Contrast, Edge, Noise reduction, ...)
- ▶ Smart measurement tools
- ▶ NDT Tools for normative inspections
- ▶ **ACUITY** Filter
- ▶ Bad pixels map
- ▶ **DICONDE**
- ▶ Compliant with all major NDT standards (ISO 17636, ASTM-E 2698, E2736, E2737, E2597, Safran PR5250, Airbus AITM 6-7007 and Boeing BSS-7044)
- ▶ Wall thickness measurement
- ▶ Control of many X-ray generator brands and models
- ▶ Any language available upon request
- ▶ **X-RIS** is open to discuss the development of new software tools



## Dereo UP ACCESSORIES

**X-RIS** makes your job easy and supplies :

- ▶ 40m cable reel (designed by **X-RIS** for minimization)
- ▶ Bipods and tripods
- ▶ Carrying case and backpack
- ▶ Touchpads and laptops
- ▶ **GemX** portable battery powered X-ray generators



[www.xris.eu](http://www.xris.eu)