

## 2.8mm Insertion Probe



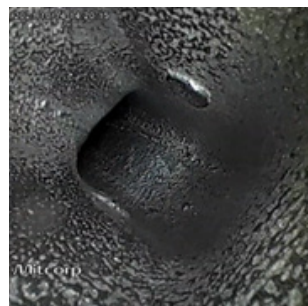
The 2.8mm insertion probe is designed for small entries and orifices. It is available for the X2000 videoscope and is a perfect addition for inspections of casting or machining parts or any application where a small diameter is needed.



### Bright & Clear Images

The 2.8mm scope does not compromise between high image quality for a small diameter. Expect sharp & clear images. The bright LEDs let you see clearly in dark spaces, and the wide FOV offers a great overview. And no more blurry images, thanks to the 3mm -  $\infty$  DOF range!

- Resolution: 800x800
- FOV: 120
- DOF: 3mm -  $\infty$



### Precise Movements:

A short distal-end and four-way articulation ensure precise movements! Thanks to the small diameter, the bending radius is also small and allows you to reach your inspection target even in confined spaces.

- 4-Way Articulation
- 110° Bending Angle
- 10.1mm Probe Head Length

## Tungsten Durability



The 2.8 mm dual view probe has a protective tungsten braided outer layer. The strength and density of tungsten extend the probe lifespan significantly and make it waterproof, heat and scratch-resistant.

- Tungsten-braided outer layer
- Waterproof (1m depth; 30min)
- 100°C heat resistance
- Unyielding to scratches and corrosion

## Specifications

| 28D4W-F-TU-M                  |  |
|-------------------------------|--|
| Probe Head Diameter           | 2.8mm  |
| Probe Head Length             | 10.1mm   |
| Direction of View             | Front  |
| Illumination                  | Front LEDs   |
| Field of View (FOV)           | 120°   |
| Depth of Field (DOF)          | 3mm~∞  |
| Still Image Resolution (.jpg) | 800x800  |
| Video Resolution (.mov)       | 800x800  |
| Articulation angle            | Full ways≥110°   |
| Probe length                  | 1.5m   |
| Operating temperature         | In air: -10~80°C, In water:10~30°C   |
| Probe head material           | Stainless Steel  |
| Probe Material                | Tungsten Braided   |
| Joystick Buttons              | Brightness+, Brightness-, snapshot / record  |
| Lock and move                 | Joystick / Unlock switch on console  |
| Dust and water proof          | Joystick console: IP 54; Insert Tube: under water 1m for 30 minutes  |
| Relative humidity             | Max 95% non-condensing   |
| Liquid resistance             | Operable when exposed to machine oil, light oil or 5% saline solution  |
| Rigid sleeve                  | OD: 6mm / ID: 5mm Protection: OD:8mm Extension joint ring: OD: 10mm Grip material Rubber/ Aluminum / Plastic; Tube material: Stainless steel |



[www.mitcorp.com.tw](http://www.mitcorp.com.tw)  
[sal@mitcorp.com.tw](mailto:sal@mitcorp.com.tw)

2F., No.75, Wenhua 1st Rd., Guishan., Taoyuan 333, Taiwan  
 T+886-3-328-7177 F+886-3-328-7176

